



THE FLAT NYC

23 W 24th Street
(b/w 5th & 6th and Broadway)
(212) 372-7019
VenuesNYC.com

About The Space

THE FLAT | NYC IS A MULTI-USE, FLEXIBLE, MODULAR AND VERSATILE SPACE FOR VARIOUS TYPES OF SHORT- AND LONG-TERM EVENTS/FUNCTIONS, INCLUDING:

ART EXHIBIT
NETWORKING EVENT
DINNER PARTY

BRAND ACTIVATION
FILM+PHOTO SHOOT
EXHIBITS

FASHION SHOWS
POP-UPS
CORPORATE PARTY

Located in the Flatiron District, The Flat | NYC is just steps away from Madison Square Park, The Flatiron Building and Eataly.

Venue Amenities

2,500

Sq. Ft. Street Level

2,500

Sq. Ft. Lower Level

250

Person Occupancy



PRIME LOCATION

The Flatiron District nearby Madison Square Park with easy access to parking and public transportation

ACCESSIBILITY

Accessible to individuals with disabilities, including available ADA bathroom

USABLE SPACE

2,500 sq ft of open space at street level with 25'0" high visibility street exposure; 200 sq ft private upper mezzanine; 2,500 sq ft basement

NEWLY & FULLY RENOVATED

With a modern industrial raw design (exposed original wood beams and brick walls)

Main Floor

250 Person Occupancy
2,500 Sq. Ft.
Column Free
18' High Ceilings

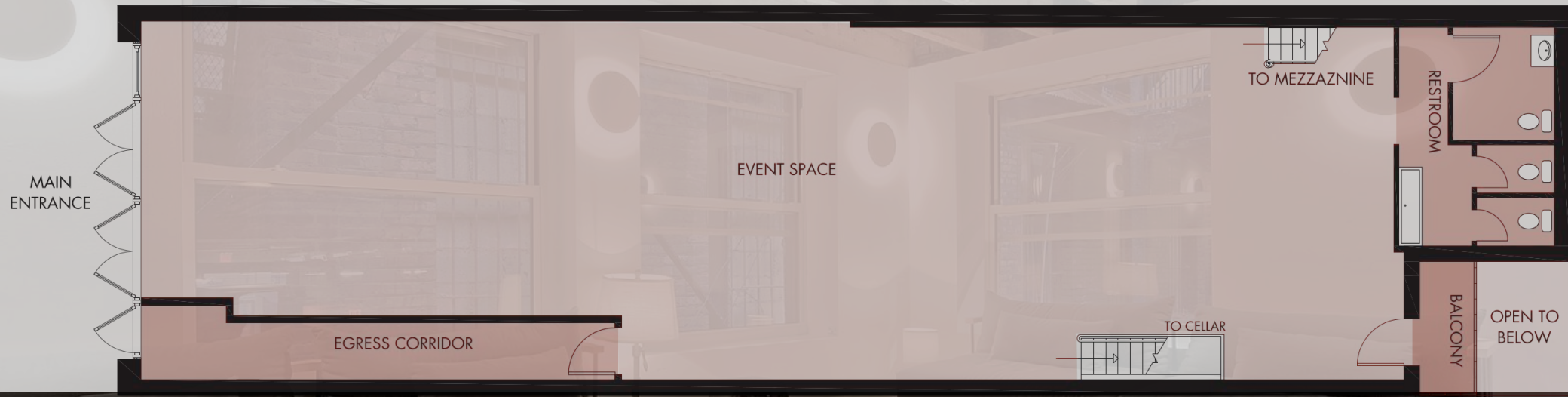
Other Features

- Glass Storefront
- 18'0" High Ceilings
- Outdoor Juliette balcony overlooking outdoor
- Industrial court yard with original pop-art/street art applied to the walls and floor
- 3 Skylights
- Original Hardwood Floor
- Fully Integrated Sound System & DJ Equipment
- Blackout and Shade Curtains
- Employee Restroom
- VIP/Green Room with a Full Shower and Seating Area
- Storage

Floor Plans

Total Usable Space: 5,200 Sq. Ft.

Main Level



Lower Level



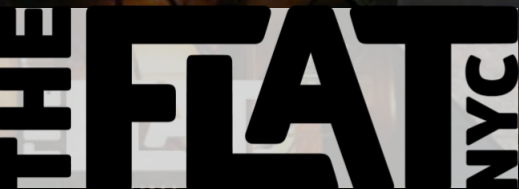
The Neighborhood

- (1) Flatiron Building
- (2) Eataly
- (3) Bo's
- (4) Tocombi
- (5) Italienne



- (6) Junoon,
- (7) Flat Iron Hall
- (8) Madison Square Park
- (9) Cosme
- (10) Masonic Hall

23 W 24th Street
(b/w 5th & 6th and Broadway)
(212) 372-7019



venuesNYC.com

